

# Grain cart Interbenne

## Interbenne

27 m<sup>3</sup>

38 m<sup>3</sup>

46 m<sup>3</sup>

**Harvest  
Fertilizer  
Seed**



**PERARD**



Interbenne. Some use it only with cereal, you use it with the fertilizer and seed too.

### *Three main functions*

#### **TRANSFER**

3 different capacities to meet all requirements:  
27 m<sup>3</sup> 38 m<sup>3</sup> 46 m<sup>3</sup>

#### **TRANSPORT**

With a body shell no wider than 2.55m, the Interbenne is deemed a transportation vehicle by the French government vehicle testing service, and can be safely driven on the road when fully loaded.

#### **RESUPPLY**

The kinematics of the drain screw allows the unloading position and height to be selected: for instance, on the side, for the spreaders and seeders, and to the rear, in a case.



Why?

The increasing evolution of agricultural land to harvest by machine requires increasingly production rates and involves an optimization of the flawless harvest time.

The fight against the false stops (stationary drain, delimitation of parcels, empty moves of combine harvester...) becomes a priority in the effectiveness and profitability of crops.





Up to 30% extra return by  
reducing machine stops.



The higher the machine output, the more expensive stops become. It is imperative to reduce the "dead time" in order to optimise harvesting fields.

Straw cereals, like oleaginous or maize - the INTERBENNE adapts perfectly to all kinds of harvest. The superior incline considerably facilitates visibility for loading purposes.



#### **Controlling the fill**

The three large Triplex portholes allow operators to see the fill level within the tank.

#### **Quick and well cushioned.**

The capacity associated with the unloading output of a transporter is not the only element for success. The transporter must be able to move quickly between the combine harvester and the bar waiting on the edge of the field.



Equipped with a boogie tandem or a sprung tridem, the INTERBENNE can move at high speed even on uneven terrain.

#### **Ground protection.**

The significant height of the chassis guarantees the complete protection of straw swaths.

#### **Time is money**

25% extra returns – that means harvesting an area in 3 days instead of 4, or 3 machines instead of 4!







## Unloading at all levels



### **Variable height**

The drain screw on the INTERBENNE has been specially designed to allow the unloading of its contents on all positions. Moreover, it is possible to unload from a height of 2m to 4.30m.

The great length of the screw allows to complete the larger seeder but also to leave the truck on the road by letting it pass over a pit to drain.

### **Perfect aim.**

The camera placed at the end of the screw connected to the in-cabin monitor gives the driver a perfect view of the tank being filled.

### **Total control.**

The screw drive is ensured by the tractor's power take-off of 1000 tr/min. The unloading output can be doubled by changing the rating.



### **Perfectly dry**

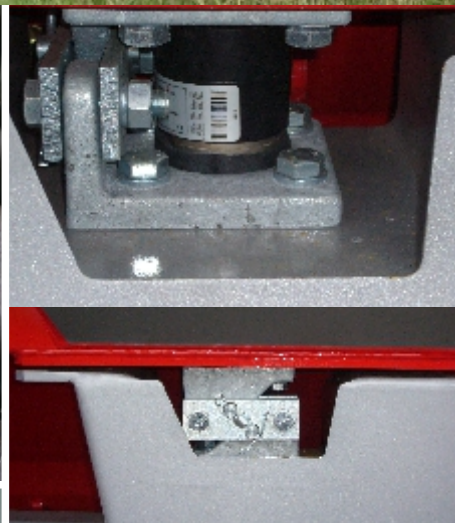
Easy to put in place thanks to the control system, the canvas cover, mounted on a roller, covers the tank completely and protects its contents from bad weather.







## Easy maintenance



### **Well informed**

As an option, the INTERBENNE can be equipped with an electronic weighing system. Four gauges combined with an in-cabin case give the exact weight in real time of the product being transported; the daily return and level of production are thus perfectly recorded.

### **Access to parts.**

The robust rive mechanism is easy to access. The belts commands ensure longevity and low maintenance costs.

### **Easy cleaning.**

The traps at the bottom of the tank and the unloading trap allow the Interbenne to be cleaned quickly after seeds or corrosive products have been passed through.



Just like a simple bar, the INTERBENNE requires no particular maintenance when in use.





Interbenne 46 with wheels 750/60 R 30,5

#### ***Hydraulic suspension***

For unbeatable clearance, the Interbenne 46 is equipped with hydraulic suspension: it is specially designed to ensure perfect machine stability when empty or full, and guarantees comfortable movement when in use.

#### ***Hydraulic cones***

Hydraulic cone inside the tank allow the close totally the bottom screw. Very useful to reduce the flow, or stop the unload when the truck is full.

#### ***Level indicator***

A level indicator indicate the opening of the cones on the top of the bottom screw. It allow to reduce the flow for complete a truck or for use with fertilizer.

**Hydraulically controlled  
cleaning hatches**







## Europe grain car Record\*

**31 tons of rape in 60 s**

### Technical specifications

	Interbenne 27	Interbenne 38	Interbenne 46
Capacity	27,00 m³	38,00 m³	46,00 m³
Gross weight	24,00 t	38,00 t	50,00 t
Axle type	Tandem	Tridem follow.	Tridem follow.
Unloading height	4,30 m	4,30 m	4,50 m
Multi-position lateral unload	●	●	●
Height maxi.	4,30 m	4,30 m	4,50 m
Height mini.	1,80 m	1,80 m	1,10 m
Rear unloading	●	●	●
Drain screw diameter	500 mm	500 mm	700 / 600 mm
Base screw transmission	Mechanical	Mechanical	Mechanical
Drain screw transmission	Mechanical	Mechanical	Mechanical
Suspended drawbar	○	●	●
Electronic weighing system	○ on 4 studs	○ on 6 studs	○ on 6 studs
Wheels			
Serie	600/55 x 26.5	600/55 x 26.5	600/55 x 26.5
Option	700/50 x 26.5	700/50 x 26.5	800/45 R26,5
	800/45 x 26.5	-	750/60 R30,5
Fertilizer equipment	●	●	●
Cover and gateway	○	○	○
Camera	○	○	○
Length overall	8,80 m	11,20 m	12,38 m
Total width without wheels	2,54 m	2,54 m	2,54 m
Total height	3,50 m	3,74 m	3,74 m
Empty weight	7,90 t	10,40 t	14,80 t

● Serie - ○ Option

\* The unload capacity is depending of type of grain and humidity. It cannot be considered as forming part of the contract.

### Guaranteed value.

The INTERBENNE PERARD is the result of many hours of study, many seasons of tests and listening to the real needs of farmers.

Its modern design, robustness and easy maintenance all make this machine an essential element in harvesting fields.

It minimises mechanisation costs and considerably increases field output. Moreover, the choice of mechanical, hydraulic and electrical components that make up this product, along with the quality of PERARD products - proved many times over - make the Interbenne a very valuable tool indeed.



Thank to  
Farming Photography  
[www.farmingphotography.co.uk](http://www.farmingphotography.co.uk)  
The UK leading Agricultural Photography company





**PERARD**

01/15 - DC 1d PI - Dane i fotografie niehandlowe. Uwaga: wybór różnych opcji może zmniejszyć pojemność oraz ładowność. Niniejsza broszura przeznaczona jest do dystrybucji na całym świecie. Dostępność poszczególnych opcji ukazanych na fotografiach różni się w poszczególnych krajach.

Avenue de l'Europe - Z.I. de Baleycourt  
F-55100 VERDUN  
Tél: +33.(0)3.29.73.73.73 - Fax: +33.(0)3.29.73.73.74  
[www.perard.fr](http://www.perard.fr) - [contact@perard.fr](mailto:contact@perard.fr)

ISO 9001

**BUREAU VERITAS**  
Certification

